

Waste cone

Waste cone provides quick-and-easy visual confirmation of proper water flow. Two sight glasses extending from the center allow users to observe the flow and ensure that fire pump pressure relief valve's activation



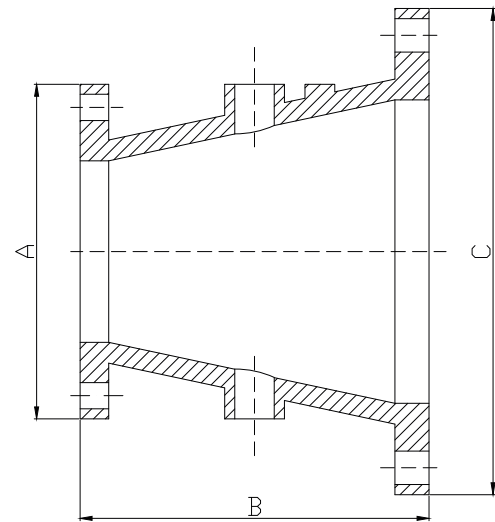
NFPA 20

- Designed to use with UL/FM approved pressure relief valves
- Manufactured in Accordance with NFPA 20 requirement
- Available in flanged 150 and 300 class , Raised face and Flat face options

Materials of Construction Available in

- Ductile Iron ASTM A 536-65 in FBE coated
- Carbon Steel - ASTM A216 Grade WCB in FBE coated
- Stainless Steel 316 ASTM A743 Grades CF3M and CFM8*
- Super Duplex Stainless Steel - ASTM A890 Grade 5A (CE3MN) *
- Nickel Aluminum Bronze (NAB) - ASTM B148 Alloy C95800*
- Standard sight glass material in Stainless Steel. Monel, Super Duplex & Hastelloy are available upon request

*Fusion Bonded Epoxy Coating, up on request



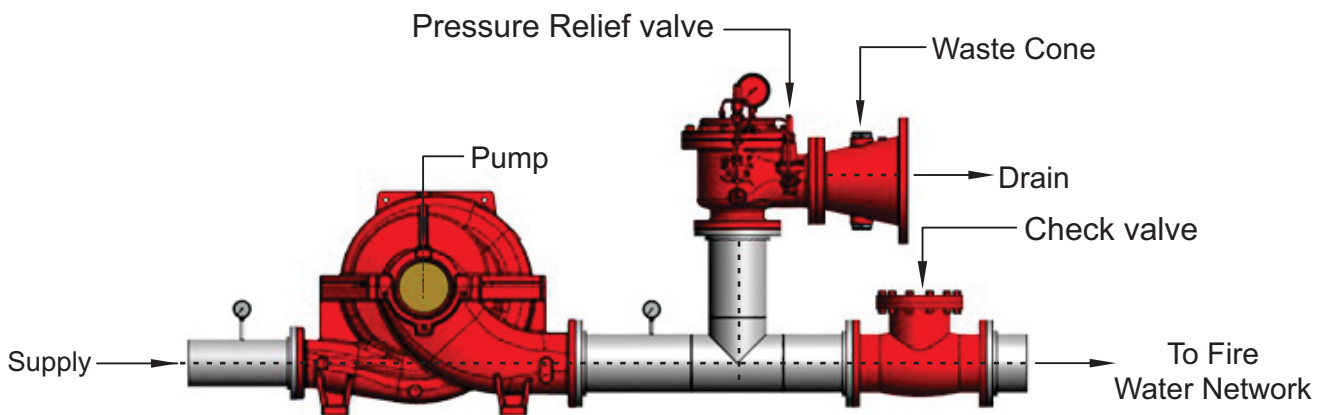
SECTION VIEW

DIMENSION OF PRESSURE CLASS 150 X 150 FOR MODEL MS-WC							
PART NO	CONNECTION SIZE	PUMP GPM	A	B	C	NUMBER OF HOLES (OUTLET)	NUMBER OF HOLES (OUTLET)
MS-WC-150-01	3" X 5"	0-450	7.50	8.25	10.00	4	8
MS-WC-150-02	3" X 6"	450-500	7.50	9.00	11.00	4	8
MS-WC-150-03	4" X 6"	500-750	9.00	9.00	11.00	8	8
MS-WC-150-04	4" X 8"	750-1000	9.00	10.25	13.50	8	8
MS-WC-150-05	6" X 8"	1000-1500	11.00	10.25	13.50	8	8
MS-WC-150-06	6" X 10"	1500-2500	11.00	11.50	16.00	8	12
MS-WC-150-07	8" X 12"	2500-3500	13.50	13.00	19.00	8	12
MS-WC-150-08	8" X 14"	3500-5000	13.50	14.00	21.00	8	12

*All dimensions are in inches (A, B & C)

DIMENSION OF PRESSURE CLASS 300 X 300 FOR MODEL MS-WC							
PART NO	CONNECTION SIZE	PUMP GPM	A	B	C	NUMBER OF HOLES (INLET)	NUMBER OF HOLES (OUTLET)
MS-WC-300-01	3" X 5"	0-450	8.25	9.24	11.00	8	8
MS-WC-300-02	3" X 6"	450-500	8.25	9.69	12.50	8	12
MS-WC-300-03	4" X 6"	500-750	10.00	9.75	12.50	8	12
MS-WC-300-04	4" X 8"	750-1000	10.00	11.06	15.00	8	12
MS-WC-300-05	6" X 8"	1000-1500	12.50	11.19	15.00	12	12
MS-WC-300-06	6" X 10"	1500-2500	12.50	12.63	12.63	12	16
MS-WC-300-07	8" X 12"	2500-3500	15.00	14.25	20.50	12	16
MS-WC-300-08	8" X 14"	3500-5000	15.00	15.25	23.00	12	20

*All dimensions are in inches (A, B & C)



- Maxi-Seal
Sharjah, Abudhabi – United Arab Emirates
- Maxi-Seal
Muscat – Oman
- Maxi-seal
Doha – Qatar
- Maxi-seal
Mumbai & Gujarat –India
- Maxi-seal
Beijing – China

