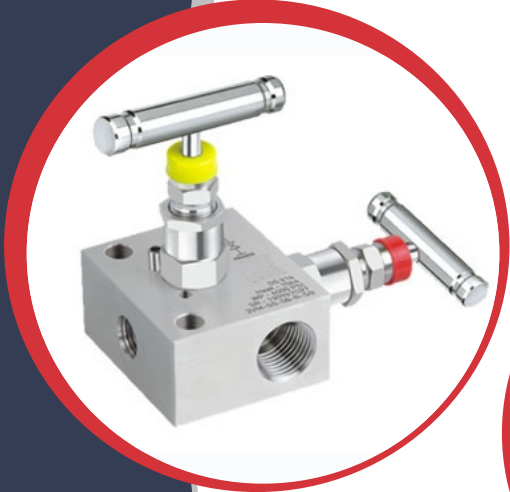




An ISO APPROVED

PED : 2014/68/EU



**PRODUCTS  
OVERVIEW**

## COMPRESSION TUBE FITTINGS (DOUBLE FERRULES)

### TUBE TO MALE PIPE THREAD



MALE CONNECTOR  
MC



BULKHEAD MALE  
CONNECTOR- BMC



MALE ELBOW  
ME

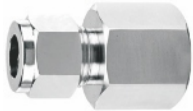


MALE BRANCH  
TEE- MBT



MALE RUN TEE  
MRT

### TUBE TO FEMALE PIPE THREAD



FEMALE CONNECTOR  
FC



BULKHEAD FEMALE  
CONNECTOR- BFC



FEMALE ELBOW  
FE



FEMALE BRANCH  
TEE- FBT



FEMALE RUN TEE  
FRT

### TUBE TO TUBE



UNION-U



BULKHEAD UNION  
BU



UNION ELBOW  
UE



UNION TEE  
UT



UNION CROSS  
UC

FRACTIONAL TUBING

: 1/8", 1/4", 5/16", 3/8", 1/2", 5/8", 3/4", 7/8", 1" in OD

METRIC TUBING

: 3, 6, 8, 10, 12, 14, 16, 18, 20, 22, 25 in mm

STANDARD THREAD

: BSP, NPT, BSPT, UNF, METRIC & OTHERS ON REQUEST

MATERIAL

: SS 304/316/316L/BRASS/INCONEL/MONEL/HAST-C & OTHERS ON REQUEST

## INSTRUMENTATION PIPE FITTINGS



HEX NIPPLE



HEX LONG NIPPLE



HEX PLUG



ADAPTER



BUSH



COUPLING



MALE HOSE NIPPLE



FEMALE HOSE NIPPLE



PIPE NIPPLE



HEX COUPLING



FEMALE CAP



THREE PIECE UNION



FEMALE ELBOW



MALE ELBOW



ELBOW- MAL X FEMALE



TEE FEMALE



TEE MALE



CROSS FEMALE

CONNECTION  
MATERIAL

: 1/8" TO 1" - NPT/BSP & OTHERS ON REQUEST

: SS 304/316/316L/BRASS/INCONEL/MONEL/HAST-C & OTHERS ON REQUEST

## NEEDLE VALVES



OD X OD



MALE X FEMALE



FEMALE X FEMALE



ANGLE TYPE

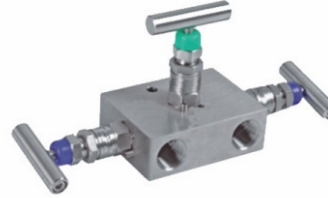
## MANIFOLD VALVES



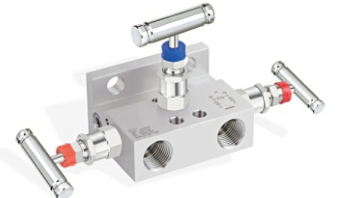
2VM 'R' TYPE



2VM 'RM' TYPE



3VM 'R' TYPE



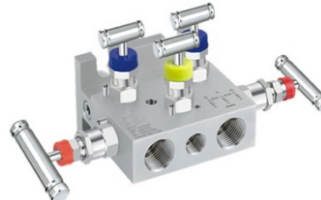
3VM 'T' TYPE



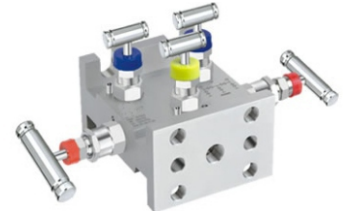
3VM 'H' TYPE



5VM 'R' TYPE



5VM 'T' TYPE



5VM 'H' TYPE

## GAUGE VALVE



SINGLE PORT



MULTI PORT



1/2" TO 2" - 150# TO 2500#

**PROCESS & INSTR. CONNECTION** : 1/4" TO 1" - NPT/BSP & OTHERS ON REQUEST  
**BODY MATERIAL** : SS 304/316/316L/BRASS/INCONEL/MONEL/ HAST-C & OTHERS ON REQUEST  
**MAX. WORKING PRESSURE** : 3000 PSI / 6000 PSI / 10000 PSI  
**OPTIONS** : OXYGEN SERVICE / NACE/PMI/TPI/GRAFOIL & PEAK PACKING

## BALL VALVE



BAR STOCK BALL VALVE



HIGH PRESSURE BALL VALVE



BALL VALVE OD X OD



3 WAY BALL VALVE

**PROCESS & INSTR. CONNECTION** : 1/4" TO 1" - NPT/BSP & OTHERS ON REQUEST  
**BODY MATERIAL** : SS 304/316/316L & OTHERS ON REQUEST  
**MAX. WORKING PRESSURE** : 2000 PSI / 6000 PSI AT 100°C

## PRESSURE GAUGE ACCESSORIES



SNUBBER



GAUGE COCKS  
1 WAY / 2 WAY



GAUGE COCKS  
3 WAY



GAUGE SAVER



SYPHONE  
(Q & U TYPE)



SWIVEL ADAPTER



FIN TYPE



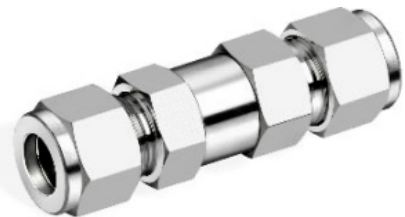
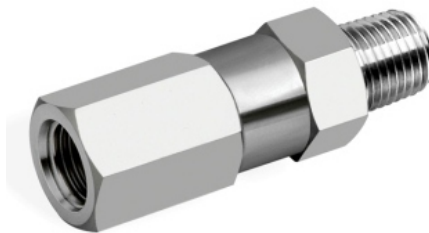
PERFORATED TYPE

## COOLING TOWER

**PROCESS & INSTR. CONNECTION**  
**BODY MATERIAL**  
**MAX. WORKING PRESSURE**  
**SET PRESSURE**  
**OPTIONS**

: 1/4" TO 1"- NPT/BSP & OTHERS ON REQUEST  
: SS 304/316/316L/BRASS/INCONEL/MONEL/HAST-C & OTHERS ON REQUEST  
: (SNUBBER 3000 PSI /6000 PSI ) & (Gauge Cock 1500 PSI)  
: GAUGE SAVER- 0.3 TO 400 bar  
: OXYGEN SERVICE / NACE/PMI/TPI

## CHECK VALVE/NRV



**PROCESS & INSTR. CONNECTION**  
**TUBE OD SIZE**  
**BODY MATERIAL**  
**MAX. WORKING PRESSURE**

: 1/4" TO 1"- NPT/BSP & OTHERS ON REQUEST  
: 1/8" TO 1" & 3MM TO 25MM  
: SS 304/316/316L/BRASS/INCONEL/MONEL/HAST-C  
: 3000 PSI / 6000 PSI / 10000 PSI

## THERMOWELL



THREADED



FLANGED



WELDED



SANITARY

**CONNECTION**  
**FLANGE SIZE**  
**PRESSURE RATING**  
**MATERIAL**  
**OPTIONS**

: 1/4" TO 1"- NPT/BSP & OTHERS ON REQUEST  
: 1/2" TO 3" ANSI & DN25 TO DN100 DIN  
: 150# TO 1500# ANSI & PN10 TO PN100  
: SS 304/316/316L/BRASS/INCONEL/MONEL/HAST-C & OTHERS ON REQUEST  
: NACE/PMI/TPI/X-RAY/CAP & CHAIN

## DIAPHRAGM SEALS



**MATERIAL** : SS 304/316/316L/Inconel/Monel/Hast-C & Others On Request  
**DIAPHRAGM SEALS** : Flanged, Threaded, Welded, Sanitary, DIN, Inline, Flushing Ring and Other Connections

## INSTRUMENTATION HARDWARE

### AIR HEADERS



**HEADER PIPE SIZE** : 1" TO 4" (Seamless / ERW) Pipe / Sch- 40/ Sch- 80/ Sch- 160/C Class  
**INLET** : Flange (ANSI B 16.5) 1/2" TO 3" or Ball valve of size 1/4" to 2" or with Flange & Valve Both at inlet  
**OUTLET / DRAIN** : Needle Valves / Ball Valves / Pipe Male- Female Open Threads  
**TEST PRESSURE** : Standard 20 kg/ cm.sq. (High Pressure Test offered)  
**MATERIAL** : SS 304/316/316L/CS & Others on request

### CONDENSATE/SEALPORT



**PIPE SIZE** : 1" TO 4" (Seamless / ERW) Pipe / Sch- 40 to Sch - XXS  
**TYPE** : 3 Way / 4 Way  
**PIPE THREAD END CONN.** : 1/4" to 2 NPT / BSP & Others on request (up to 9000 PSI)  
**SOCKET WELD PIPE SIZE** : 1/4" to 2" NB (up to 9000 PSI)  
**MATERIAL** : SS 304/316/316L/CS/BRASS/INCONEL/MONEL/HAST-C & OTHERS ON REQUEST

## PRESSURE - TEMPERATURE GAUGES / RTD - THERMOCOUPLE AUTOMATES & CNC PRECISION PARTS



Stem Blank, Neck, Bush, BT Cap, Movement Screw, Dial Screw, Socket, Gland assembly, Nipple Union Nipple, etc & Other as per Drawing

## Testing Facilities :

- Hydrostatic Test Bench upto 20,000 PSI
- Pneumatic Test Bench upto 1400 PSI
- Bursting Strength Test
- Ultrasonic Test as per ASME Sec V article 4
- Dye Penetrate Test as per ASME Sec V article 6
- PMI Testing

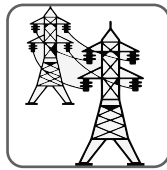
## Industries We Cater



Oil & Gas



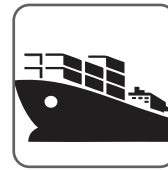
Chemical &  
Pharmaceutical



Power Generation



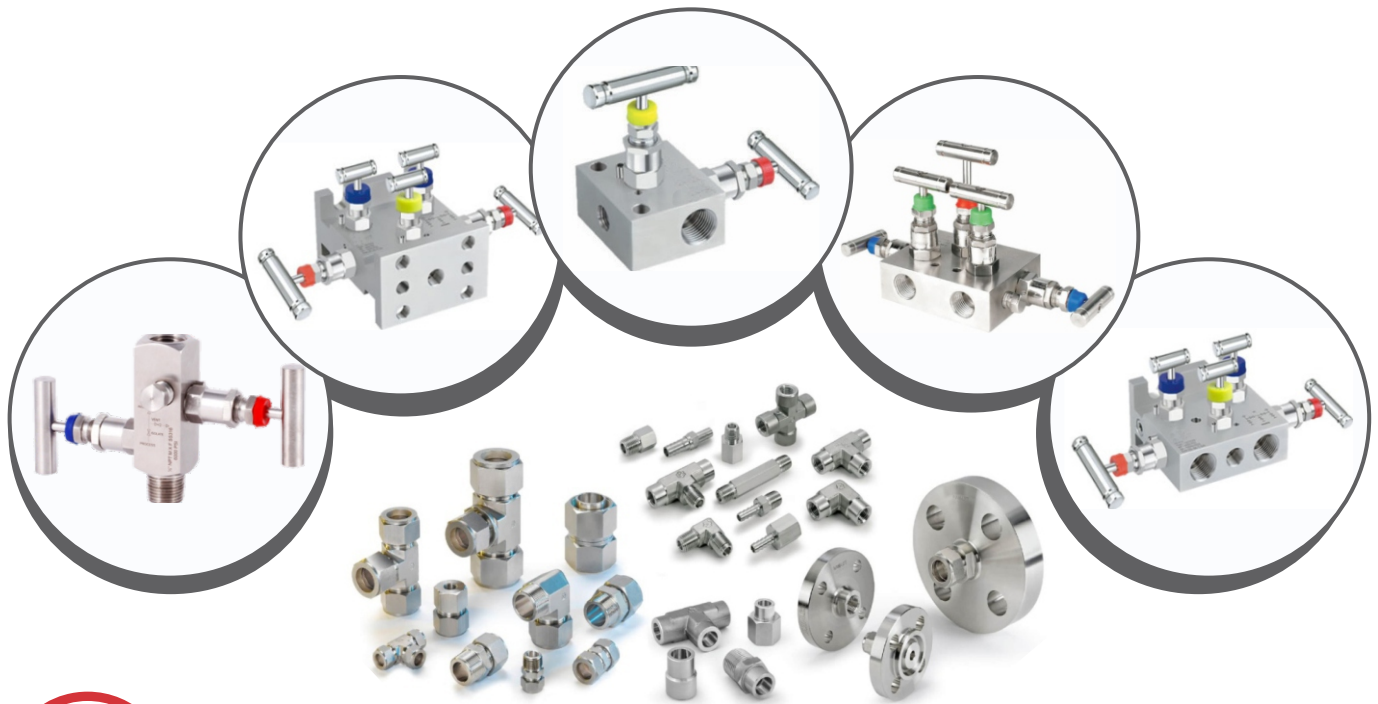
Petro Chemical



Shipping



Other Process  
Industries



- Maxi-Seal  
Abudhabi, United Arab Emirates
- Maxi-Seal  
Gujarat, India
- Maxi-seal  
Mumbai, India



An ISO APPROVED



PED : 2014/68/EU